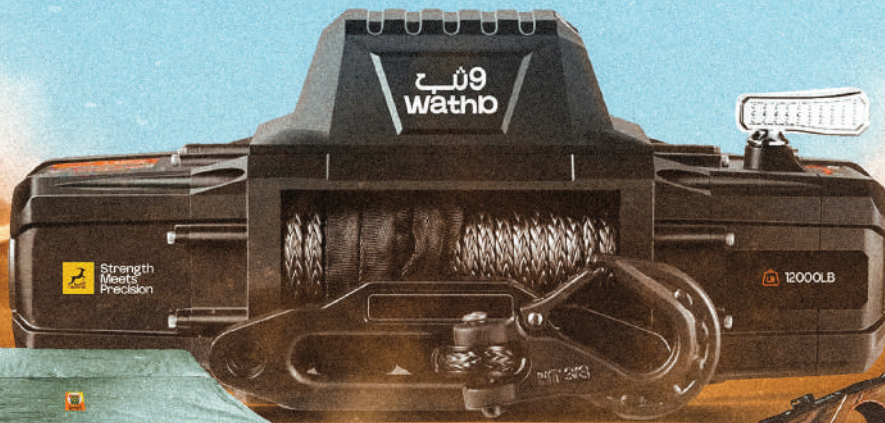




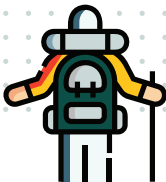
# Wathb Winch



Strength Meets Precision  
[www.wathboffroad.com](http://www.wathboffroad.com)



# Explore The Unseen



# Built for the Bold

## Key Product Features:



- **12,000 lb (5443 kg) Pulling Capacity:** Engineered for extreme off-road recovery missions, Ensuring robust and reliable performance in challenging conditions.
- **Heavy-Duty Steel Construction:** Premium housing with rust-resistant matte finish ensures Maximum durability and prolonged lifespan, even in tough environments.
- **Lightweight Synthetic Rope (26m):** Significantly lighter and safer than traditional steel cables, Making it easier to handle and minimizing risk during operation.
- **IP67 Waterproof & Dustproof:** Completely protected against harsh environmental elements, Ideal for use under all weather conditions and rough terrains.
- **Advanced Dynamic Braking System:** Offers controlled load handling, providing stability and Safety during recovery processes.
- **Dual Wireless & Wired Remote Control:** Includes versatile operation options, enabling Convenience and ease of control under diverse operational scenarios.
- **High-Efficiency, Low-Noise Motor:** Optimized to deliver continuous, quiet operation with Minimal vibration, enhancing both performance and comfort.
- **Intelligent Overheat Protection with LED Indicators:** Built-in thermal sensors and indicator Lights proactively manage and protect against overheating, ensuring safer, smarter operation.

## After-Sales Services for the Winch:

- Spare parts available within the Kingdom and ready for shipment to any distributor
- Dedicated winch service and technical support center in the Kingdom
- Authorized distributors across multiple cities in the Kingdom
- Warranty claims and service requests can be submitted anytime, from anywhere, through the official Wathb website



# Extended Technical Specifications

Engineered with Precision





**Save This Manual** Keep this manual for safe operation and precautions. It will guide you on assembly , inspection, maintenance and cleaning procedures. Read this manual before using the winch, failure to do so may result in serious injury or death.

### Specification

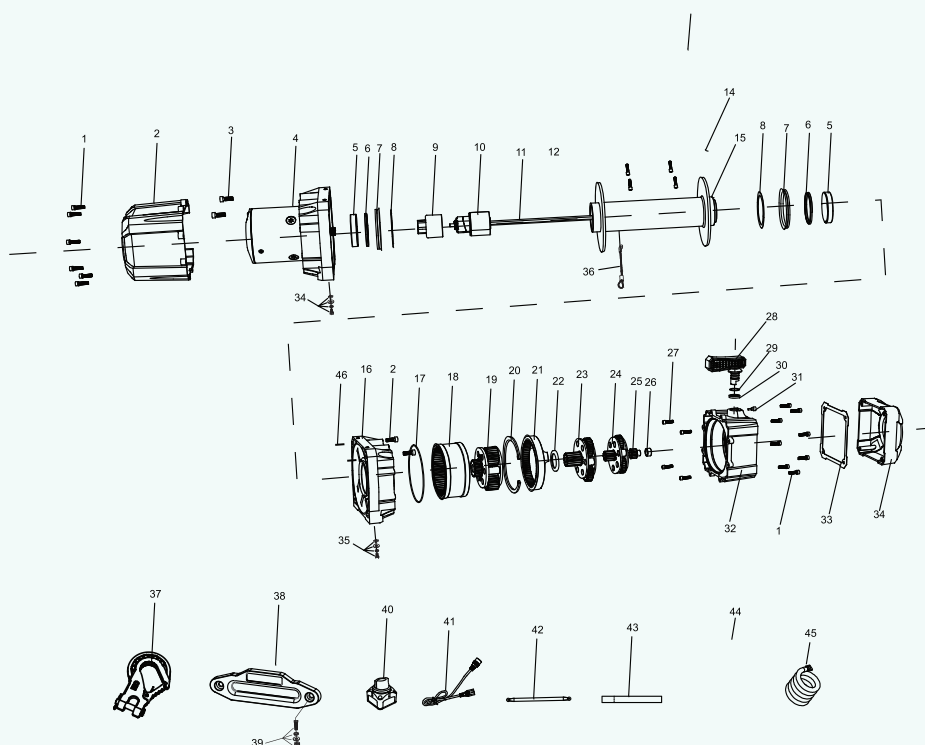
Motor	6.5hp/4.8kw,series wound
Control	Pendant controller
Gear train	3 stage planetary
Gear reduction ratio	218:1
Braking	Automatic load-holding brake
Drum size	Diameter2.5"(63.5mm)×length 9.6"(224mm)
Cable	3/8"(9.5mm)×80'(24.4 m)
Remote control switch	Included
Extra wireless remote	Optional
Battery	Recommended: 650CCA
GW	33.2kg
Overall dimension (L×W×H)	20.9"X6.3"X9.6" (532X160X245mm)
Mounting bolt pattern	10"×4.5"(254×114.3 mm)

### Pull,speed,AMPS

Line pull lbs(kgs)	Line speed ft/min(m/min)	Current (Amps)
0 (0)	33,1 (10,1)	60
3000 (1361)	12,1 (3,7)	166
6000 (2722)	8,9 (2,7)	209
9000 (4082)	6,6 (2,0)	349
12000 (5443)	4,9 (1,5)	390

## Parts List

Part	Description	Qty	Part	Description	Qty
1	Star Screw M <sup>o</sup> x 20	14	24	Planetary Gear Assembly 1	1
2	Motor Cover	1	25	Hex Sun Gear	1
3	Star Screw M <sup>h</sup> x 20	4	26	Bearing	1
4	Motor Assembly	1	27	Hex Socket Screw M <sup>o</sup> x 20	4
5	Iron Bushing	2	28	Clutch Handle	1
6	Radial Ring	2	29	O-Ring Ø10 x 1,8	1
7	Waterproof Sealing Ring	2	30	Clutch Handle Washer	1
8	Tab	2	31	Clutch Retaining Bolt	1
9	Spline Drive Sleeve	1	32	Gear Box	1
10	Brake Assembly	1	33	Washer	1
11	Transmission Shaft S <sup>h</sup> x 289	1	34	Gearbox End Cover	1
12	Star Screw M <sup>6</sup> x 14	4	35	Wathb Winch Mounting Hardware	4
13	Control Box Assembly	1	36	Synthetic Rope	1
14	Tie Bar	2	37	Hook	1
15	Drum Assembly	1	38	Fairlead	1
16	Gearbox Base	1	39	Fairlead Mounting Hardware	2
17	O Ring	1	40	Disconnect Switch	1
18	Ring Gear Z <sup>o</sup> Y	1	41	Remote Control Cable	1
19	Planetary Gear Assembly 2	1	42	Disconnect Switch Cable	1
20	Circlip Washer Ø120	1	43	Red Hook Strap	1
21	Ring Gear Z <sup>Y</sup> Y	1	44	Wireless/Wired Remote Control	1
22	Washer	1	45	Ground Cable	1
23	Planetary Gear Assembly 2	1	46	Pin	2





## Troubleshooting

Failure	Possible Cause	Corrective Action
Motor overheats	<ol style="list-style-type: none"> <li>1. Incorrect power cords</li> <li>2. Winch running time too long</li> </ol>	<ol style="list-style-type: none"> <li>1. Use only supplied power cords</li> <li>2. Allow winch to cool down periodically</li> </ol>
Motor does not turn on	<ol style="list-style-type: none"> <li>1. Switch assembly not connected properly.</li> <li>2. Loose battery cable connections</li> <li>3. Vehicle battery needs charging</li> <li>4. Solenoid malfunctioning</li> <li>5. Defective switch assembly</li> <li>6. Defective motor</li> <li>7. Water has entered motor</li> <li>8. Internal damage or wear</li> </ol>	<ol style="list-style-type: none"> <li>1. Insert switch assembly all the way into connector.</li> <li>2. Tighten nuts on all cable connections</li> <li>3. Fully charge battery</li> <li>4. Tap solenoid to loosen contacts. Apply 12 volts to coil terminals directly. A clicking indicates proper activation</li> <li>5. Replace switch assembly</li> <li>6. Check for voltage at armature port with switch pressed. If voltage is present, replace motor</li> <li>7. Allow to drain and dry. Run in short bursts without load until completely dry</li> <li>8. Have technician service winch</li> </ol>
Motor runs but wire rope drum does not turn	Clutch not engage	Move the Clutch Handle to the Engaged position. If problem persists contact a qualified technician to check and repair unit.
Motor runs slowly or without normal power	<ol style="list-style-type: none"> <li>1. Insufficient current or voltage</li> <li>2. Loose or corroded battery cable connections</li> <li>3. Incorrect power cords</li> </ol>	<ol style="list-style-type: none"> <li>1. Battery weak, recharge Run winch with vehicle motor running</li> <li>2. Clean, tighten, or replace</li> <li>3. Use only supplied power cords</li> </ol>
Motor runs in one direction only	<ol style="list-style-type: none"> <li>1. Defective or stuck solenoid</li> <li>2. Defective switch assembly.</li> </ol>	<ol style="list-style-type: none"> <li>1. Tap solenoid to loosen contacts</li> <li>2. Repair or replace solenoid</li> <li>3. Replace switch assembly</li> </ol>

## Line pull and rope capacity in each layer

Layer	Rated line pull lbs(kgs)	Total rope on drum ft (M)
1	12000 lb (5443 kg)	16. 3( 5. 0)
2	9517 lb (4317 kg)	37(11)
3	7885 lb (3577 kg)	61.0(18.3)
4	6732 lb (3053 kg)	80 (24.4 )



# Safe Precautions







# Safe Precautions

## ving!

Observe all safety precautions for your personal safety and the safety of others. Improper equipment operation may cause personal injury and equipment damage. Read the following instructions carefully before attempting to operate your Wathb Winch and retain these instructions for future reference.

### 1. Dress Properly

Avoid wearing loose clothing or jewelry that could get caught in moving parts.

Always wear leather gloves when handling Wathb Winch cable. Never handle the cable with bare hands, as broken wires may cause injuries.

Use non-skid footwear.

### 2. Maintain a Safe Distance

Ensure all individuals stand clear of the Wathb Winch cable and load during operation. A cable that breaks or detaches under load can recoil, causing serious injury or death.

Always keep proper footing and maintain balance during operation.

### 3. Correct Use of Wire Rope

Keep the wire rope away from sharp edges. Synthetic rope should also be kept away from heat sources and oil.

Only use the power cords and wire ropes provided. Do not use thinner or longer cables, nor multiple cables simultaneously.

### 4. Avoid Overworking the Wathb Winch

If the motor becomes excessively hot, immediately stop operation and allow it to cool down for a few minutes.

Do not maintain power if the motor stalls.

Never exceed the maximum line pull ratings specified in the tables. Shock loads must also remain within these limits.

### 5. Prevent Unintentional Start-Up

Ensure the Wathb Winch clutch is disengaged when not in use and fully engaged during operation.

### 6. Inspect for Damaged Parts

Conduct thorough inspections before using the Wathb Winch. Damaged parts must be promptly replaced by an authorized service center.

### 7. Ventilation Safety

Maintain proper ventilation when working around batteries, as invisible, explosive hydrogen gas can accumulate and ignite from sparks generated during battery connections.

### 8. Battery Connections

Only connect the Wathb Winch to a clean, corrosion-free battery.

### 9. Wathb Winch Repairs

Use only identical replacement parts during repair to avoid significant safety hazards.

### 10. Cable Re-spooling

Always wear leather gloves during re-spooling operations. Maintain a slight tension on the cable to ensure proper winding.



# Operation Precautions





# Operation Precautions

## **Avoid Overloading**

Be alert to dynamic loads; sudden movements can overload and damage the Wathb Winch.

## **Power Management**

Do not continue powering the Wathb Winch if the motor stalls. Verify that the load is within rated capacity for the specific rope layer (refer to specifications). Ensure the battery is fully charged, and use double-line rigging whenever possible.

## **Clutch Engagement**

Never disengage the clutch under load. Always engage the clutch fully before initiating operation.

## **Safe Handling**

Avoid placing fingers through the hook, as they may get caught or drawn into the fairlead or drum. Use a strap instead of direct hand contact with the hook.

## **Cable Safety**

Place a heavy blanket or similar object over the Wathb Winch cable during use. This practice dampens cable backlash in case of failure (see Figure A).

## **Maintain a Safe Position**

Do not stand near or directly behind a straightened Wathb Winch cable. If the cable snaps or slips, it may recoil and cause injury.

## **No Personnel Lifting**

Do not use the Wathb Winch to lift people under any circumstances.

## **Use a Spotter**

Always have a designated spotter to assist and ensure it is safe to operate the Wathb Winch.





# Note

## **Transmission safety**

Never operate the Wathb Winch with your vehicle in gear or park, as this could damage your vehicle's transmission.

## **Cable safety**

Avoid wrapping the cable around objects or hooking it onto itself. Doing so can cause damage to both the cable and the object being pulled.

## **Personal safety**

Keep hands, clothing, hair, and jewelry clear of the drum and cable area during Wathb Winching.

## **Cable inspection**

Do not use the Wathb Winch if the cable is damaged, frayed, or kinked.

## **Operational safety**

Do not allow anyone to stand near or behind the cable during Wathb Winch operation, as it may whip back if it breaks or slips. Always stand safely to the side.

## **Switch management**

Disconnect the remote switch when the Wathb Winch is not in use.



### **Caution**

Do not operate the Wathb Winch continuously it's designed for intermittent use. If the motor becomes hot, stop immediately and allow it to cool down for a few minutes.

# Check the Wathb Winch Carefully and Thoroughly Before Operating!



# Maintenance

It's recommended to use the Wathb Winch regularly (once per month) to maintain optimal condition. Unwind the cable around 15 meters, free-spool another 5 meters, and rewind using power. This maintains components in proper condition. Contact an authorized service center for maintenance or repairs.

**Wathbing:** To avoid accidental operation and injury, disconnect the remote control and battery cables before inspection, maintenance, or cleaning.



## Wire rope Replacement

- Release the clutch.
- Fully unwind and remove the old wire rope.
- Securely attach a new wire rope.
- Re-spool carefully without kinks.
- Test Wathb Winch operation thoroughly.

# Duty cycle

The duty cycle indicates the maximum recommended operational duration within a 15-minute period. Exceeding this can cause overheating or damage. Always adhere to recommended duty cycle limitations.

## Pendant operation instructions

Turn the disconnect switch on before using the wireless remote control, and switch it off when not in use.

Press and hold the button for 3 seconds until the red light flashes to activate wireless control.

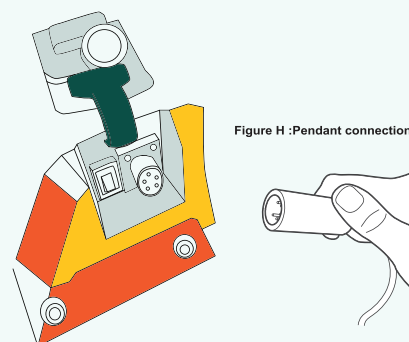


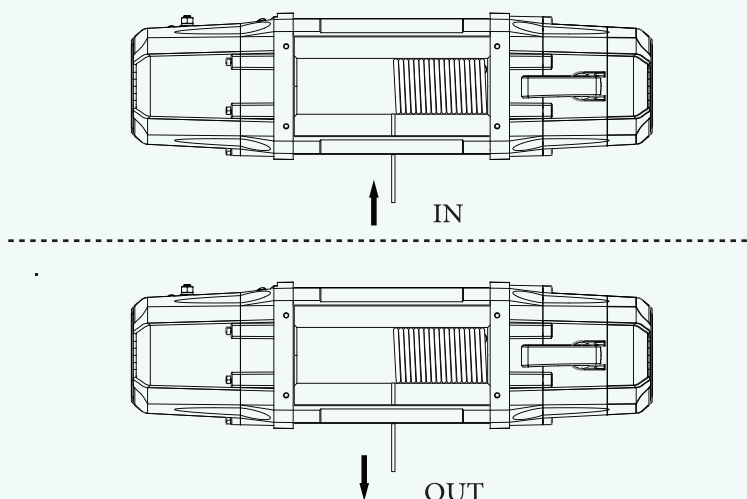
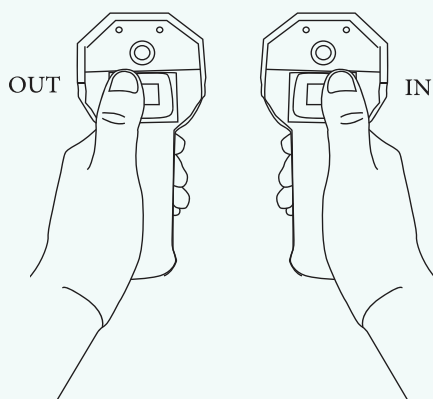
Figure H :Pendant connection

# Wathb Winching operation steps

- Secure your vehicle by applying the parking brake or wheel chocks.
- Pull out the desired length of Wathb Winch cable and securely attach it to a suitable anchor point.
  - move the clutch handle to the "released" position to freely pull the cable out.
  - slide the hook strap loop over the hook, and use the strap to pull the cable out safely.

**Wathbing:** always keep at least five full wraps of wire rope on the drum.

- to engage the Wathb Winch, move the clutch handle to the "in" position.
- double-check all cable rigging before operating.
- attach the pendant controller to the solenoid box socket.





# Safe operation Guidelines

- Always ensure your spotter is positioned safely away from the vehicle and cable.
- Never use the Wathb Winch to lift or move loads overhead or aircraft.
- Disconnect the controller when not in use.
- Inspect the Wathb Winch before every use. do not operate if damaged, bent, or structurally compromised in any way.
- Maintain cable alignment; avoid any kink formation. stop Wathb Winching immediately if a kink starts forming to prevent cable damage.



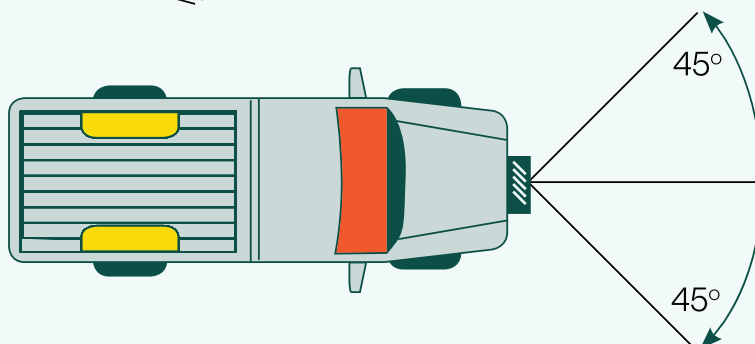
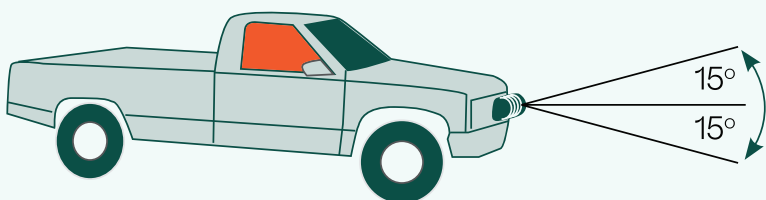
## Safe Usage tips

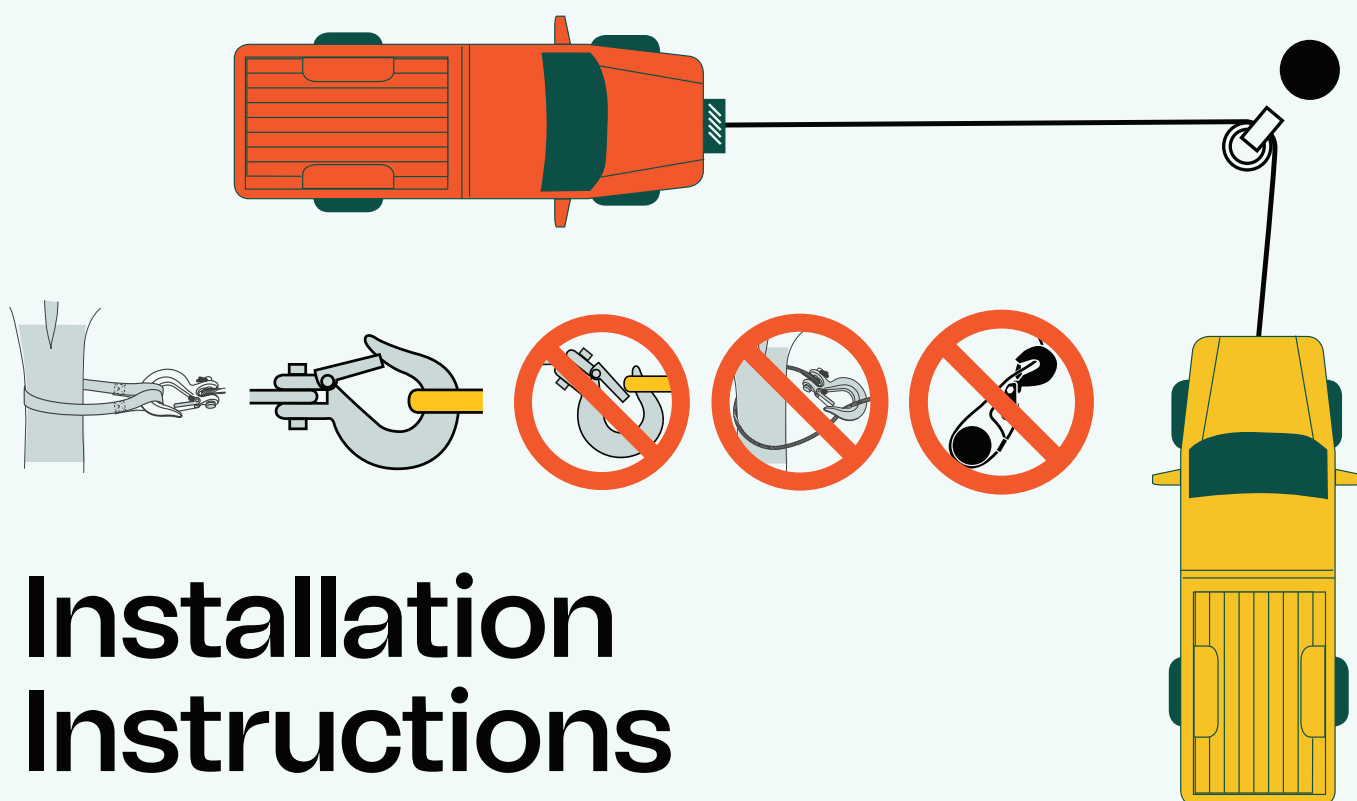
- stay alert, focused, and avoid operating the Wathb Winch under the influence of alcohol or medication.
- maintain at least five wraps of cable on the drum at all times to ensure secure operation.
- never exceed recommended angle limits:

Vertical angle: 15°

Horizontal angle: 45°

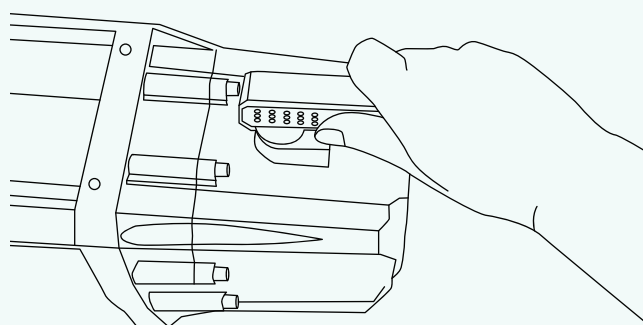
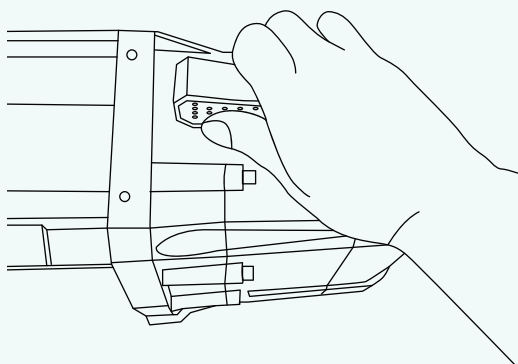
- when pulling objects at an angle, use a pulley anchored directly in front of the Wathb Winch to ensure the rope pulls straight and does not kink.





# Installation Instructions

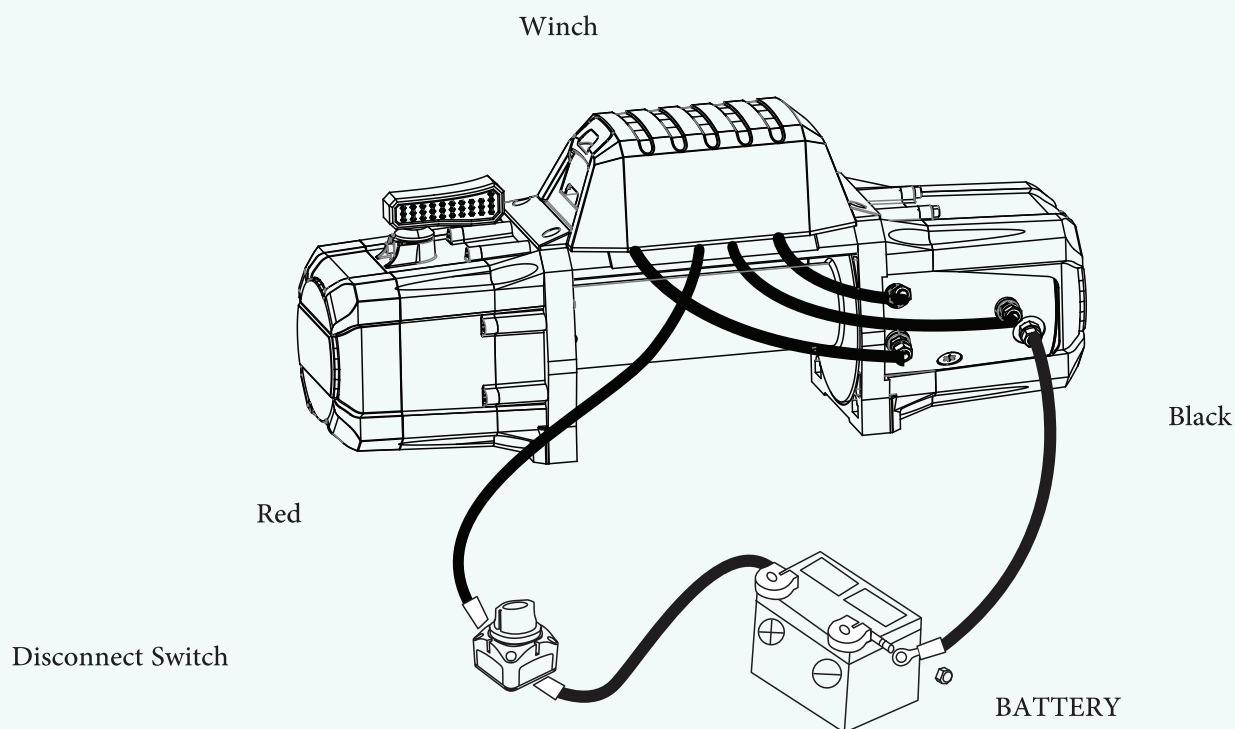
- Mount the Wathb Winch on a suitable steel mounting frame using the provided four-point foot mounting system. the Wathb Winch can be installed horizontally or vertically, but must be placed on a flat, sturdy surface.
- Ensure the mounting plate rating matches or exceeds the Wathb Winch's pulling capacity.
- Align the Wathb Winch perpendicular to the vehicle's centerline. mark the location of base mounting holes using provided dimensions.  
Mounting dimensions: Total width: 592 mm --- Mounting holes spacing: 254 mm x 114 mm
- Install the roller fairlead to evenly guide the rope onto the drum.
- Use only the hardware provided or recommended by specification for installation.



# Wiring Connections Instructions

Route wiring securely from the Wathb Winch location to the battery, avoiding moving parts, heat, or potential damage areas. If drilling is required, install a rubber grommet in the hole to protect wires from abrasion. Connect wires according to provided wiring diagram:

- red cable connects through the circuit breaker to battery positive (+).
- black cable connects directly to battery negative (-).
- wire the remote control socket securely to the solenoid box.

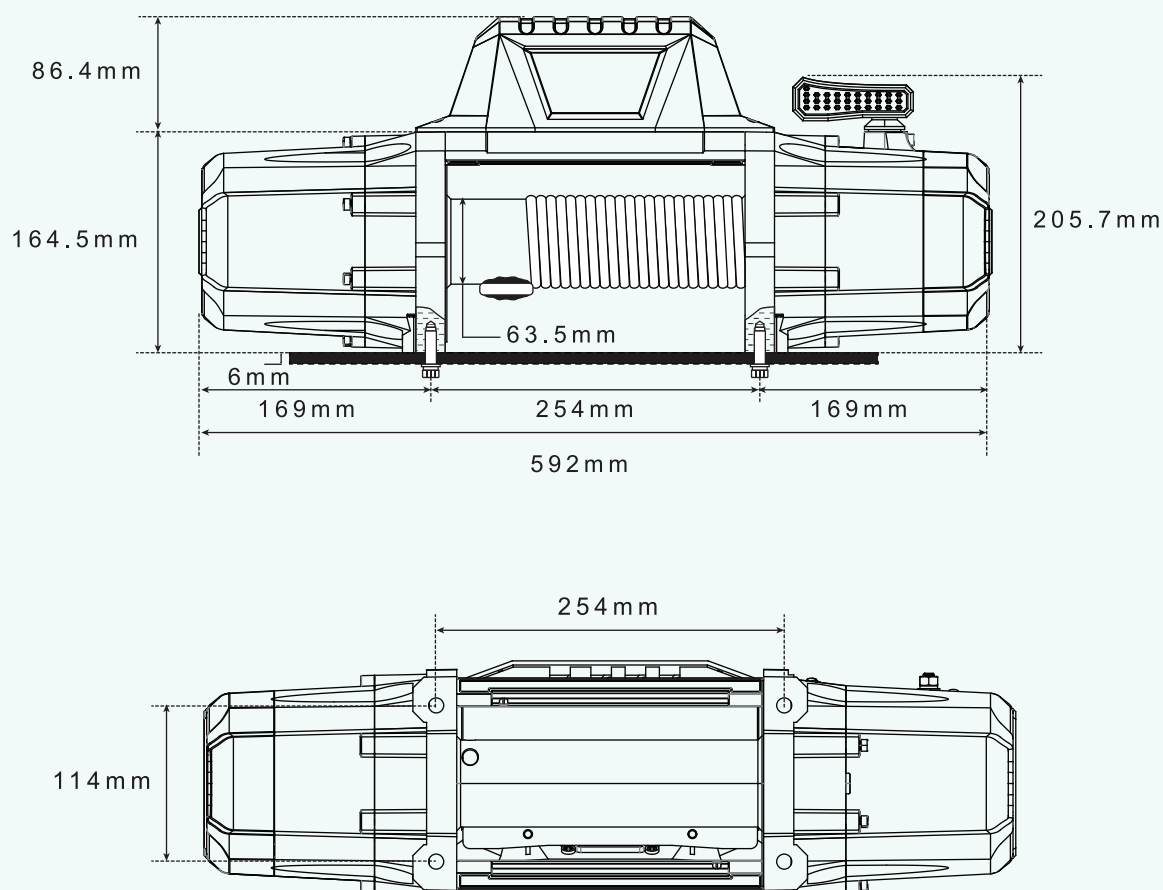


**Figure E:Wiring connections**



# Operational Advice

- Familiarize yourself with the Wathb Winch operation by conducting several practice runs before actual use.
- Learn to identify operational sounds, such as steady pulling, heavy load conditions, or cable slipping, to recognize normal vs abnormal operation.
- Always have a recovery plan and ensure rated "d" shackles and proper tree trunk protectors are used.
- Apply wheel blocks if operating on inclines.
- Confirm battery condition before operation, and wear eye protection when handling batteries.
- Never exceed the rated pulling capacity of the Wathb Winch.
- Avoid using vehicle movements in conjunction with Wathb Winch operation, as this may create dangerous shock loads.
- The Wathb Winch described in this manual is designed specifically for non-industrial, vehicle-mounted applications.



**Figure D: Winch Installation**



# Warranty & Support

Confidence Backed by Service



Wathb offers a 5-year limited warranty on all winch products, covering manufacturing defects in materials and workmanship under normal use.

This warranty covers:

Defects in materials and craftsmanship.

Mechanical or electrical malfunctions not caused by misuse.

Replacement or repair of defective parts at no cost to the customer.

This warranty does NOT cover:

Damage due to misuse, improper installation, or overloading.

Normal wear and tear (e.g. cable fraying, corrosion, scratches).

Products modified or repaired by unauthorized personnel.

Damage resulting from racing, accidents, or off-spec applications.

Claim Process:

To initiate a warranty claim, please contact our customer support team at

[Support@wathboffroad.com](mailto:Support@wathboffroad.com)

Include proof of purchase, product serial number, and a detailed description of the issue.

Wathb reserves the right to inspect the product and determine the validity of the claim. If eligible, we will repair, replace, or refund the product at our discretion.

[www.wathboffroad.com](http://www.wathboffroad.com)



# Accessories & Add-ons

Complete Your  
Recovery Kit



Enhance your Wathb Winching experience with our essential accessories:

- Heavy-duty recovery gloves
- Pulley blocks
- Tree trunk protectors
- Wathb Winch dampers
- Extended remote kits



# Brand Story & Values

More Than a Tool. It's a Mindset.

At Wathb, we stand for courage, precision, and resilience. Our gear is built for explorers who aren't afraid to get stuck—and know how to get out.

Every line, feature, and screw on this Wathb Winch was designed with purpose: to serve those who conquer the unknown.







# Welcome to The World of Wathb

## Brand Story & Founders

Driven by Vision. Engineered by Experience.

Wathb Offroad is more than just a product line—it's a lifestyle solution built by experts who live and breathe offroad adventures. Rooted in the Arabian terrain, we aim to become the preferred offroad brand in the region by addressing local needs with global expertise.

### **The Founders:**

#### **Mausa Albarqi**

Founder of Arabian4x4 and Rahaloon Overland. A pioneer in the Saudi offroad community who has tested and represented key brands from the US, South Africa, Australia, and Asia. Mausa has led more than 1500 km of expeditions in the Empty Quarter desert, pushing products to their limits in real-world conditions.

#### **Hang Weng**

Founder of one of China's longest-running 4x4 companies. With over 800 professional vehicle modification projects, Weng has built strategic alliances with 126 top-tier suppliers and developed numerous patented innovations. He has led off-road teams through China's toughest uninhabited zones and co-founded the Off-Road Club and Tough Guys Corps.

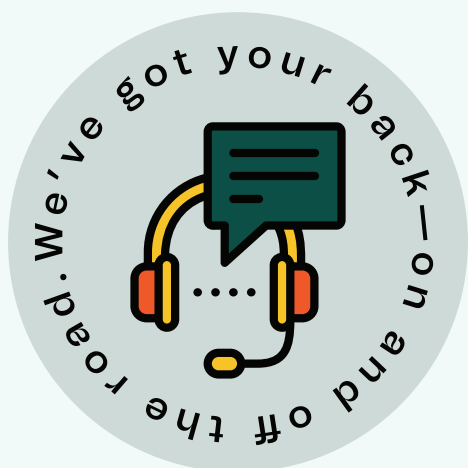
#### **Ben Ma**

A seasoned aviation engineer, Ben infuses the precision of aerospace mechanics into off-road technology. His passion for both land and sky translates into unmatched safety and technical reliability in Wathb's engineering approach.

#### **Kevin Hui**

A real estate marketing expert and off-road enthusiast, Kevin specializes in market research and customer experience design. He brings a comprehensive sales lifecycle strategy—from pre-sale to post-sale—tailored specifically for Middle Eastern consumers.


Together, the founders created Wathb as a locally-rooted offroad brand that fulfills regional demands while offering globally competitive quality and value. We are continuously expanding our product ecosystem to cover every aspect of the offroad lifestyle—delivering not just tools, but total confidence.



# Ready For the Unseen?

Explore. Recover. Dominate.

For full technical support, installation guidance, or branding customization, please contact our team at  
[Support@wathboffroad.com](mailto:Support@wathboffroad.com)  
Or visit our website: [www.wathboffroad.com](http://www.wathboffroad.com)

 QR Code: Leads to the official product page

[www.wathboffroad.com](http://www.wathboffroad.com)

